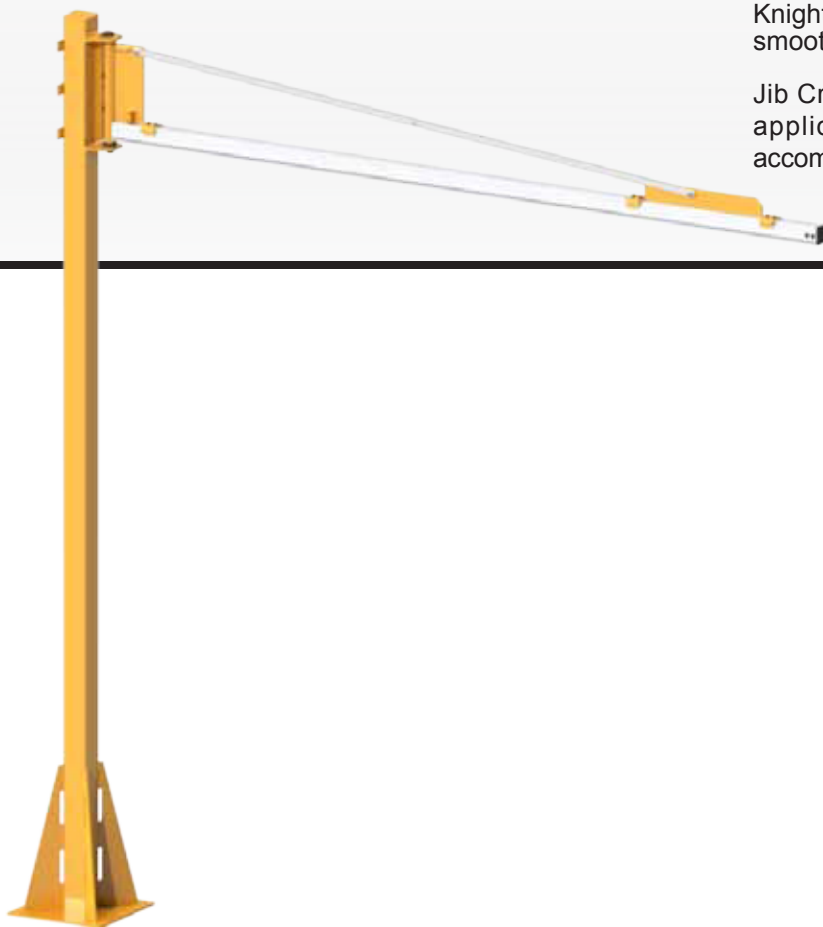


MJBA2050 Light Tool Low Profile Jib Crane

Knight Global's MJBA2050 Jib Crane offers a large tool coverage area with a single rotating rail on a floor mounted pedestal. Knight cranes are ideal for short transfer applications and are designed to move effortlessly while still carrying large loads.

Knight Jib Cranes have Timken® thrust bearings that provide a smooth 210 degree rotation.

Jib Cranes allow for maximum hoist height on low head room applications or when the overhead working space can not accommodate a rail system.

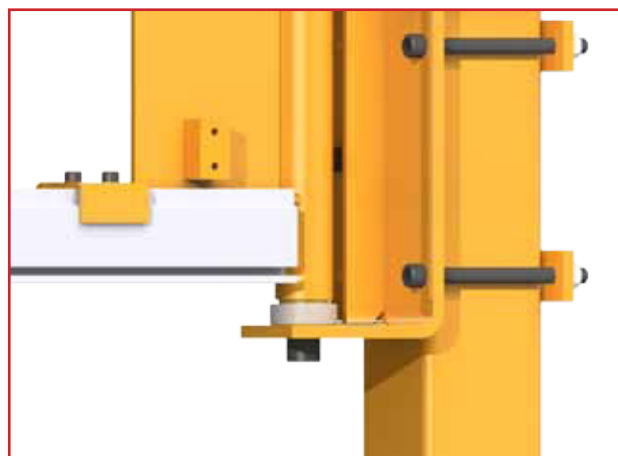


MAX. BOOM LENGTH: Up to **10 ft. (3.0m)**

MAX. CAPACITY: **50 lbs. [23kg]**

Features & Benefits

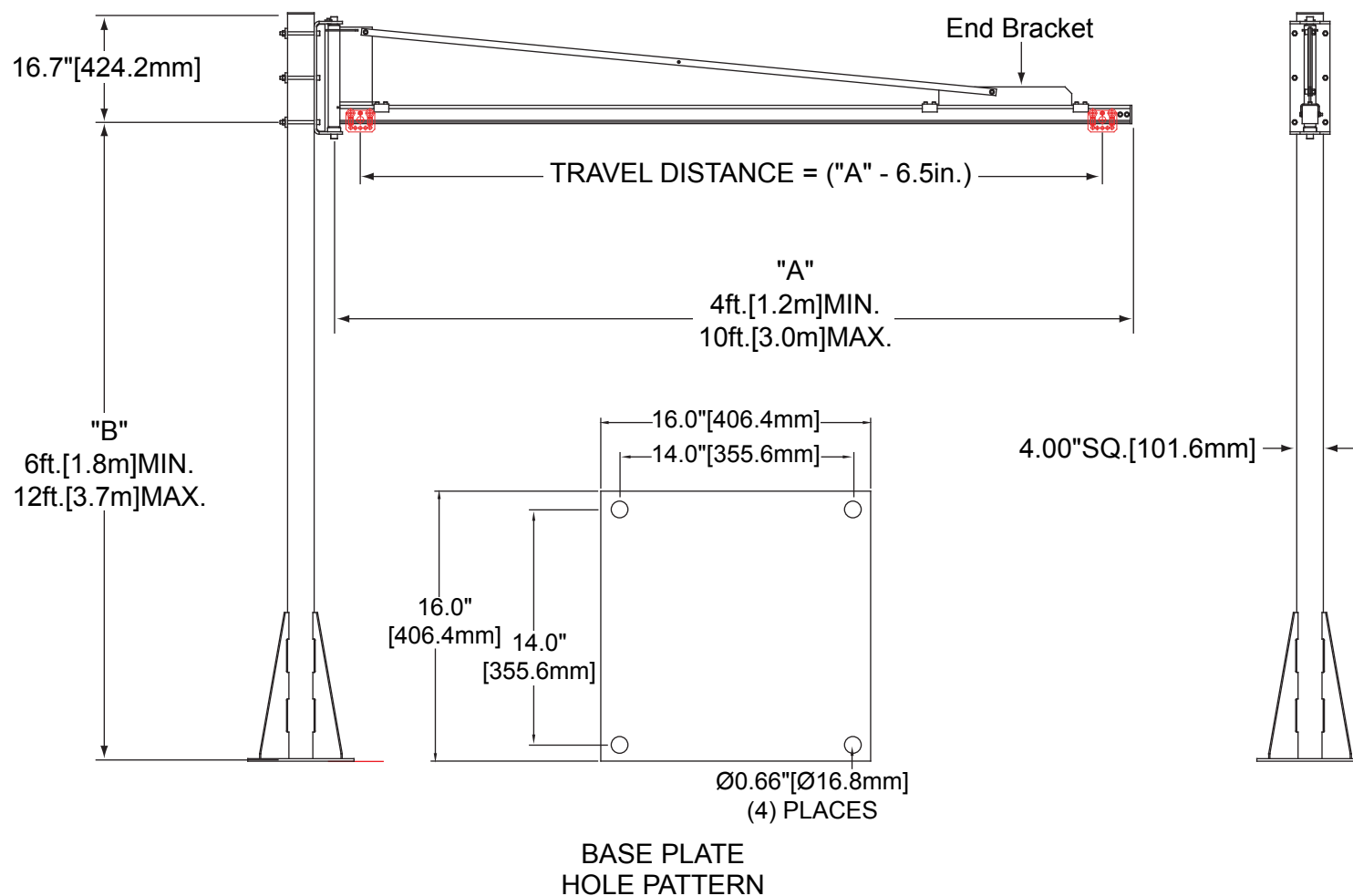
- Eliminates the need to add another rail to telescope in/out.
- Timken® thrust bearing design eases rotational effort.
- Ergonomically designed for low headroom clearance applications.
- 210 degree rotation (Optional Fitting #JSA9137).
- Maximum Under Rail Clearance Height: Up to **12 ft. [3.7m]**.



For more information, please contact a Knight Global representative.



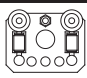
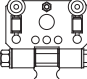
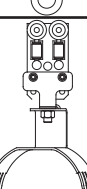
MJBA2050 Light Tool Low Profile Jib Crane



EXAMPLE:

ORDER # : MJBA2050A_120_120

	Post Height "B"	Rail Length "A"
MJBA2050A	XX	XX
	Specify Height [Max 12 ft.] (Feet)	Specify Length [Max 10 ft.] (Feet)

Optional		
RAIL	MODEL #	TROLLEY
Knight TR2000 Trolley	TRT2001	
Knight TR2000 Trolley	TRT2003	
Knight TR2000 Hose Trolley	TRM2021	

For more information, please contact a Knight Global representative.

