



22-44 OSCILLATING DRUM SANDER

FEATURING:

**SAND
SMART™**

*Variable Feed
control produces
the ultimate finish*



*Built-in cabinet door
for easy access
to storage*



The new model 22-44 OSC Drum Sander has an exclusive oscillating feature, with the push of a button the 22-44OSC sander can be operated as a simple sander or as an oscillating sander. When operating as a linear sander, the sander drum rotates as the conveyor feeds the workpiece through. When in the oscillating mode, in addition to the linear sanding operation, the sanding drum head oscillates from left to right and lowers heat build-up on the sanding belt to reduce loading and burning. Additional features include a built-in cabinet door for easy access to storage, patented conveyor TRACKERS™ that reduce the need for manual belt adjustments and our Exclusive SandSmart™ infinitely variable feed control that produces the ultimate finish to your woodworking project.

jettools.com



**Built-in cabinet door
for easy access
to storage**

**SAND
SMART™**

**Variable Feed
control produces the
ultimate finish**



- | | |
|--|-----------------------------|
| A. Height Adjustment Handwheel | D. Conveyor Bed |
| B. 1-3/4HP TEFC Motor | E. Self Cooling Drum |
| C. Exclusive Sand Smart® Variable Speed | F. 4" Dust Port |

FEATURES

- Oscillating feature reduces heat build-up on sanding belt to reduce loading and burning
- Our EXCLUSIVE SandSmart™ infinitely variable-feed control produces the ultimate finish at a rate from 0 to 10 feet per minute and prevents machine overload
- Patented conveyor belt TRACKERS™ dramatically reduce the need for manual belt adjustments
- 22" wide suspended drum is supported on both ends with a cast iron carriage arm for greater strength and easy alignment to the table surface for consistent performance
- Sealed and permanently lubricated drum ball bearings for longer life
- Precision-flattened reinforced steel conveyor bed and no-give power feed belt provide a constant smooth sanding action for better results
- Adjustable drum height and downward pressure feature virtually eliminates snipe
- Large cast-iron handwheel adjusts height at 3/32" per turn for precise sanding thickness control
- Patented abrasive take-up fasteners make changing abrasives quick and easy
- Depth gauge has locking stop to ensure accuracy
- On/off switch with overload protection is front-mounted for operator's convenience
- One feed and one drive motor for superior sanding control
- Continuous-duty, 1-3/4HP motor is designed for heavier use for longer periods of time

SPECIFICATIONS

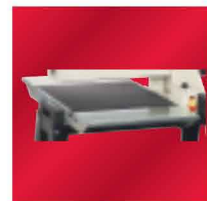
Stock Number	659006K
Model Number	22-44 OSC
Style	Closed Stand
Max. Board Width (in.)	44
Max. Board Thickness (in.)	4
Min. Board Length (in.)	2-1/4
Min. Board Thickness (in.)	1/32
Drum Diameter (in.)	5
Drum Length (in.)	22
Drum Speed (RPM)	1700
Conveyor Speed (SFPM)	0 to 10
Conveyor Motor	43 in.-lbs. torque, direct drive, dc
Dust Port Diameter (OD/in.)	4
Amps	9
Motor HP	1-3/4
Motor Phase	1
Motor Voltage	115
Prewired	115V
Net Weight (lbs.)	360

ACCESSORIES

Infeed/Outfeed Tables	98-2202
Tuf Tool	98-0060



98-0060



98-2202