

Digital Torque Gauge BTGE

PAT. PEND

Digital torque gauge series for very small torque range
2cN·m - 200cN·m



- Handheld battery-operated torque gauge combined with flip-up digital display
- Ideal for measurement, inspection and tightening for very small torque
- Can be used for checking accuracy of torque screwdrivers
- Read the peak torque both in clockwise and counterclockwise directions
- 999 data memory storage with USB output
- 5 models cover torque capacities from 2cN·m to 200cN·m

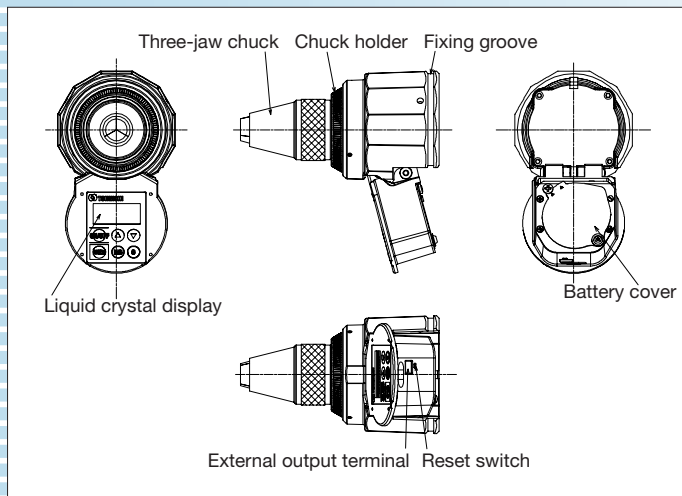




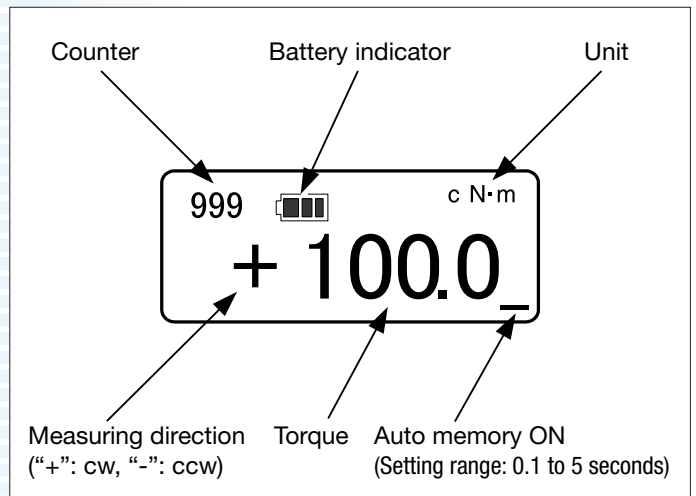
Digital Torque Gauge BTGE

External View

Body (with display opened)



Digital display details



Features

Compact & Versatile design

- Handheld body with built in flip-up digital display that can be adjusted for optimal reading and accommodates various testing positions.
- Three-jaw chuck equipped to clamp the object firmly.
- Physical stopper prevents accidental over-loading.

Wide torque range

- 5 models available covering a torque range of 2cN·m to 200cN·m.
- Capture the peak torque in both directions. (clockwise and counterclockwise)

Variety of uses

- Ideal for measuring very small torque of precision machinery, electronic devices and various assembly components.
- Use either by fixing the torque gauge (see Photo 1), or by turning the torque gauge (see Photo 2) for optimal measurement method.

Torque screwdriver checker

- Can be used for checking accuracy of torque screwdrivers. (See Photo 3)
- Screwdriver bit is secured in three fingered chuck, with display flipped out for easy viewing.

Memory & Data transfer

- Measured data storage up to 999 readings, with statistical mode displaying: sample quantity, maximum value, minimum value, and mean value.
- USB cable can be used for data transfer to PC. (sold separately)

Battery-operated

- Coin-type lithium battery (CR2450) allows 10-hour continuous operation.
- Expanded 50-hours of continuous operation using optional battery pack. (sold separately)

International use

- Applicable for international use including the EU region. CE mark applied.

Photo 1

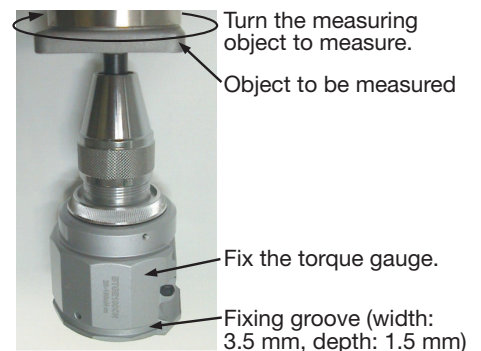


Photo 2

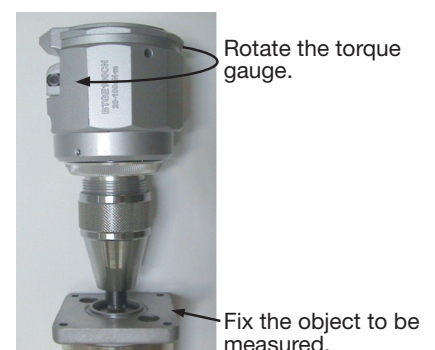
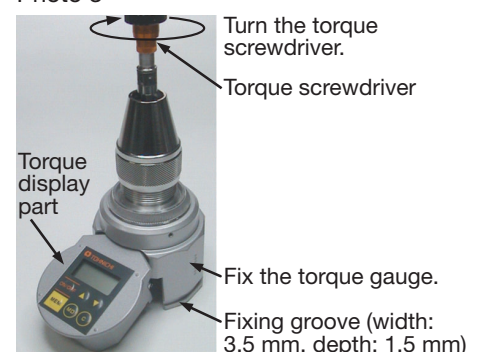


Photo 3



Models

S.I. MODEL [cN·m]	CAPACITY		METRIC MODEL [kgf·cm]	CAPACITY		AMERICAN MODEL [lbf·in]	CAPACITY		AMERICAN MODEL [ozf·in]	CAPACITY		DIMENSIONS [mm]			WEIGHT [kg]
	MIN. to MAX.	GRAD.		MIN. to MAX.	GRAD.		MIN. to MAX.	GRAD.		MIN. to MAX.	GRAD.	TOTAL LENGTH	OUTER DIAMETER	CHUCK DIAMETER RANGE	
	cN·m	cN·m		kgf·cm	kgf·cm		lbf·in	lbf·in		ozf·in	ozf·in				
BTGE10CN	2 to 10	0.01	BTGE1KM	0.2 to 1	0.001	BTGE09I	0.2 to 0.9	0.001	BTGE14Z	3 to 14	0.02				
BTGE20CN	4 to 20	0.02	BTGE2KM	0.4 to 2	0.002	BTGE1.8I	0.4 to 1.8	0.002	BTGE28Z	6 to 28	0.05				
BTGE50CN	10 to 50	0.05	BTGE5KM	1 to 5	0.005	BTGE4.4I	1 to 4.4	0.005	BTGE70Z	15 to 70	0.1				
BTGE100CN	20 to 100	0.1	BTGE10KM	2 to 10	0.01	BTGE9I	2 to 9	0.01	BTGE140Z	30 to 140	0.2				
BTGE200CN	40 to 200	0.2	BTGE20KM	4 to 20	0.02	BTGE18I	4 to 18	0.02	BTGE280Z	60 to 280	0.5	130	75	ø1 to ø8.5	0.65

Standard Accessories: Coin-type lithium battery (built-in the body), Carrying case

Common Specifications

Direction	Clockwise and counterclockwise
Accuracy	± 2 % + 1 digit
Display	7 segment LCD display Counter value: 3 digits (character height 3 mm) Torque value: 4 digits (character height 7 mm) Unit, Battery indicator, measuring direction
Measurement Mode	PEAK/RUN
Data Memory	999 data
Statistical Processing	Number of samples, maximum value, minimum value, mean value
Data Output	USB output (USB mini B terminal)
Power	Coin shaped lithium battery (CR2450)
Continuous Operating Hours	Approx. 10 hours when using coin battery, Approx. 50 hours when using battery pack BP-C1
Other Functions	Auto power off (3 min), Auto Memory/Reset 0.5 to 5 seconds variable, Auto Zero adjustment, Battery remaining indicator (in 4 steps)
Operating Temperature Range	0 to 40°C Non condensing
Display Turning Range	0 to 165 degrees

Optional Accessories

USB Connecting Cable

(Part No. 384)



(Cord length: 1.8m)

Battery Pack

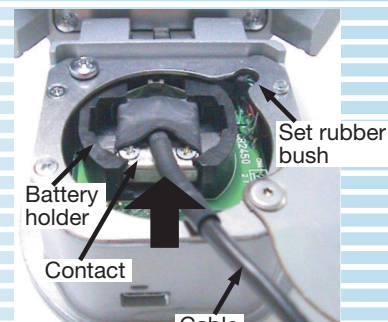
(Part No. BP-C1)

Appearance

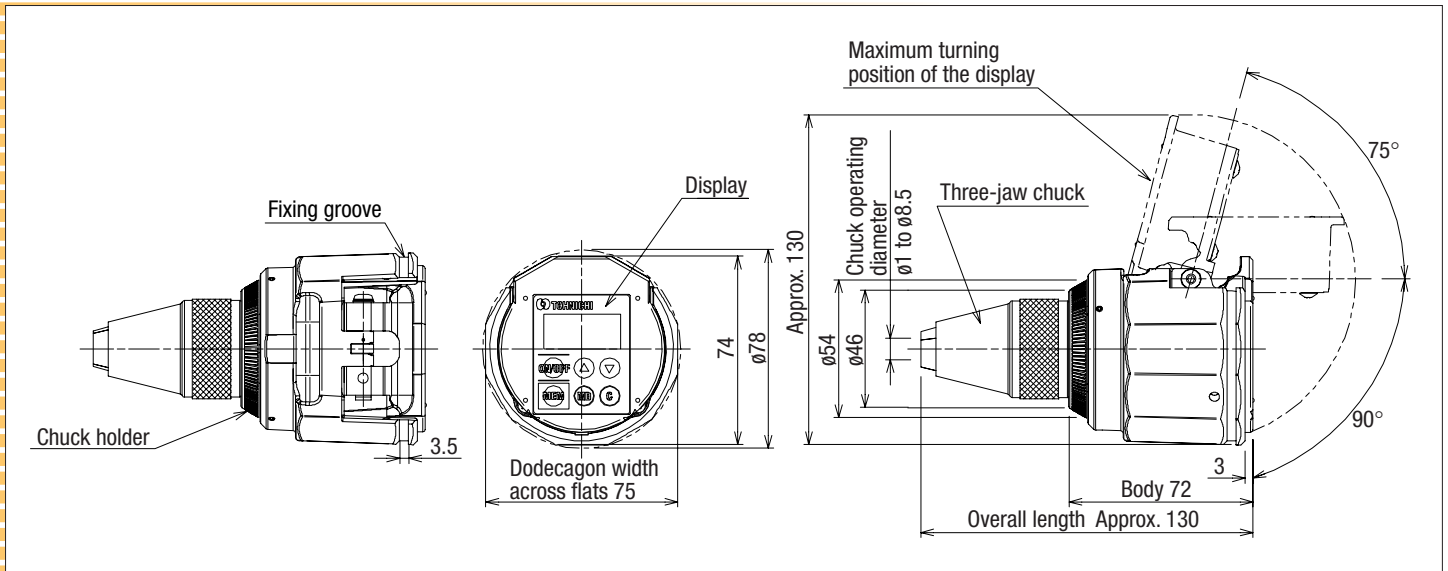


(Cord length: 1m)

Inside



Dimensions



Alternative Models

BTG (-S) Analog version of torque gauge



S.I. MODEL	WITH MEMORY POINTER	CAPACITY [cN·m]		METRIC MODEL	CAPACITY [gf·cm/kgf·cm]		AMERICAN MODEL	CAPACITY [ozf·in/lbf·in]		WEIGHT [kg]
		MIN. to MAX.	GRAD.		MIN. to MAX.	GRAD.		MIN. to MAX.	GRAD.	
-	-	-	-	-	-	-	BTG60Z-S	ozf·in 6 to 60	ozf·in 1	0.52
							BTG120Z-S	10 to 120	2	
BTG15CN	BTG15CN-S	cN·m 2 to 15	cN·m 0.2	1.5BTG-S	kgf·cm 0.2 to 1.5	kgf·cm 0.02	1.5BTG-A-S	lbf·in 0.1 to 1.5	lbf·in 0.02	
BTG24CN	BTG24CN-S	3 to 24	0.05	2.4BTG-S	0.3 to 2.4	0.05	2.4BTG-A-S	0.3 to 2.4	0.02	
BTG36CN	BTG36CN-S	4 to 36		3.6BTG-S	0.4 to 3.6		3.6BTG-A-S	0.4 to 3.6	0.05	
BTG60CN	BTG60CN-S	6 to 60	1	6BTG-S	0.6 to 6	0.1	6BTG-A-S	0.6 to 6	0.1	
BTG90CN	BTG90CN-S	10 to 90		9BTG-S	1 to 9		9BTG-A-S	1 to 9	0.1	
BTG150CN	BTG150CN-S	20 to 150	2	15BTG-S	2 to 15	0.2	15BTG-A-S	2 to 15	0.2	

Complimentary Products

TGTCL Calibration Kit for BTG/BTGE models



MODEL	COMPONENT	APPLICABLE MODEL
BTGTCL150CN	Main unit, Calibration Pulley x 2 Calibration Wire x 3 Scale Pan (5g and 100g)	All BTG and BTGE models

Note) For calibration of BTGE, the calibration adapter (Catalog No. 807) is needed.



URL ▶ <http://tohnichi.jp>
E-mail ▶ overseas@tohnichi.co.jp