

OPERATING, MAINTENANCE & PARTS MANUAL

CM[®] UNIVERSAL TROLLEY

Available in 1t, 2t & 3t capacities • Plain or Geared-Type



Follow all instructions and warnings for inspecting, maintaining and operating this trolley.

The use of any trolley presents some risk of personal injury or property damage. That risk is greatly increased if proper instructions and warnings are not followed. Before using this trolley, each operator should become thoroughly familiar with all warnings, instructions and recommendations in this manual. Retain this manual for future reference and use.

Forward this manual to the trolley operator. Failure to operate the equipment as directed in this manual may cause injury. Should you have any questions regarding this product, please call Columbus McKinnon.

The hoisting equipment described in this manual is intended for industrial use only and should not be used to lift, support or otherwise transport people.

GENERAL INFORMATION:

ANSI B30.11 compliant. The UT series trolleys are designed to be used with several Columbus McKinnon hoists up to a capacity of 3 metric tons. Safety lugs, machined wheels and sealed bearings are included with each trolley. Rubber bumpers are available as an option.

LOAD RATINGS:

Before installing, make certain the capacity of the hoist does not exceed the capacity of the trolley and the supporting structure is capable of supporting the load, hoist and trolley.

INSTALLATION:

Adjustable flange width ranges are 2.3" to 8.6" and may be mounted on either American Standard Beams or Wide-Flange Beams. Proper adjustment is obtained by positioning the washers and spacers to achieve a beam to wheel flange spacing of approximately 1/16". See pages 4 and 5 of this manual for recommended guidelines.

MAINTENANCE / INSPECTION:

The trolley should be inspected periodically for evidence of excess wear or overload and its continued ability to support the load. The frequency of inspection will depend on the severity of use. It is recommended that the user begin with a monthly inspection and extend periods to quarterly, semi-annually or annually based on monthly experience. **Any worn parts should be replaced immediately.** The trolley should be visually inspected for the following conditions: loose hardware, sideplate damage or bending, cracks or distortion, wheel wear or cracks and worn bearings.

**CM HOIST PARTS AND SERVICES ARE AVAILABLE IN
THE UNITED STATES AND IN CANADA**

As a CM Hoist and Trolley user you are assured of reliable repair and parts services through a network of Master Parts Depots and Service Centers that are strategically located in the United States and Canada. These facilities have been selected on the basis of their demonstrated ability to handle all parts and repair requirements promptly and efficiently. To quickly obtain the name of the Master Parts Depot or Service Center located nearest you, call (800) 888-0985, Fax: (716) 689-5644, visit [HYPERLINK "http://www.cmworks.com"](http://www.cmworks.com) www.cmworks.com.

**LAS PIEZAS Y REPARACIONES DE LOS POLIPASTOS DE CM ESTÁN
ASEGURADAS EN ESTADOS UNIDOS Y CANADÁ**

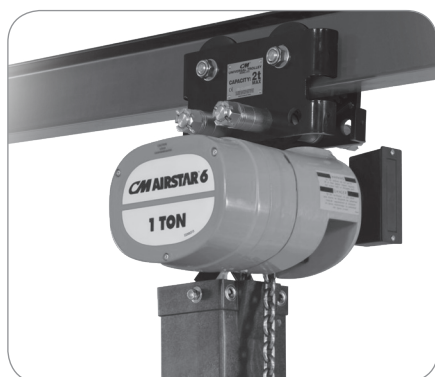
Como usuario de un polipasto y carro de CM le aseguramos cualquier reparación o la disponibilidad de cualquier pieza de repuesto a través de una red de almacenes de piezas de repuesto y centros de servicio situados estratégicamente en Estados Unidos y Canadá. Estas instalaciones se han seleccionado en base a su capacidad demostrada en la reparación de equipos y suministro de piezas de repuesto de forma rápida y eficaz. Para obtener la dirección del almacén de piezas de repuesto o del centro de servicio más cercano, llame al teléfono (800) 888-0985. Fax: (716) 689-5644, visita [HYPERLINK "http://www.cmworks.com"](http://www.cmworks.com) www.cmworks.com (sólo en Estados Unidos y Canadá).

**LE SERVICE DE RÉPARATION ET DE PIÈCES POUR PALANS CM
EST DISPONIBLE AUX ÉTATS-UNIS ET AU CANADA**

Soyez assurés qu'en temps d'utilisateur de palan et treuil CM, d'un service de réparation et de pièces fiable par l'entremise d'un réseau de Centres de service et de Dépôts de pièces maîtresses qui sont stratégiquement situés aux États-Unis et au Canada. Ces établissements ont été sélectionnés sur une base de leur habileté démontrée à s'occuper promptement et efficacement des besoins de réparation de pièces. Appelez le (800) 888-0985, Fax: (716) 689-5644, visitez [HYPERLINK "http://www.cmworks.com"](http://www.cmworks.com) www.cmworks.com pour obtenir rapidement le nom du dépôt de pièces maîtresses ou du centre de service situé le plus près.

TABLE OF CONTENTS

General Information	1
Load Ratings	1
Installation	1
Maintenance / Inspection	1
Electric/Air Hoist Suspension Kits	3
UT Washer & Spacer Placement	4-5
UTG Geared Hand Drive Installation	6
UT Parts List	7
Declaration of Conformity	8

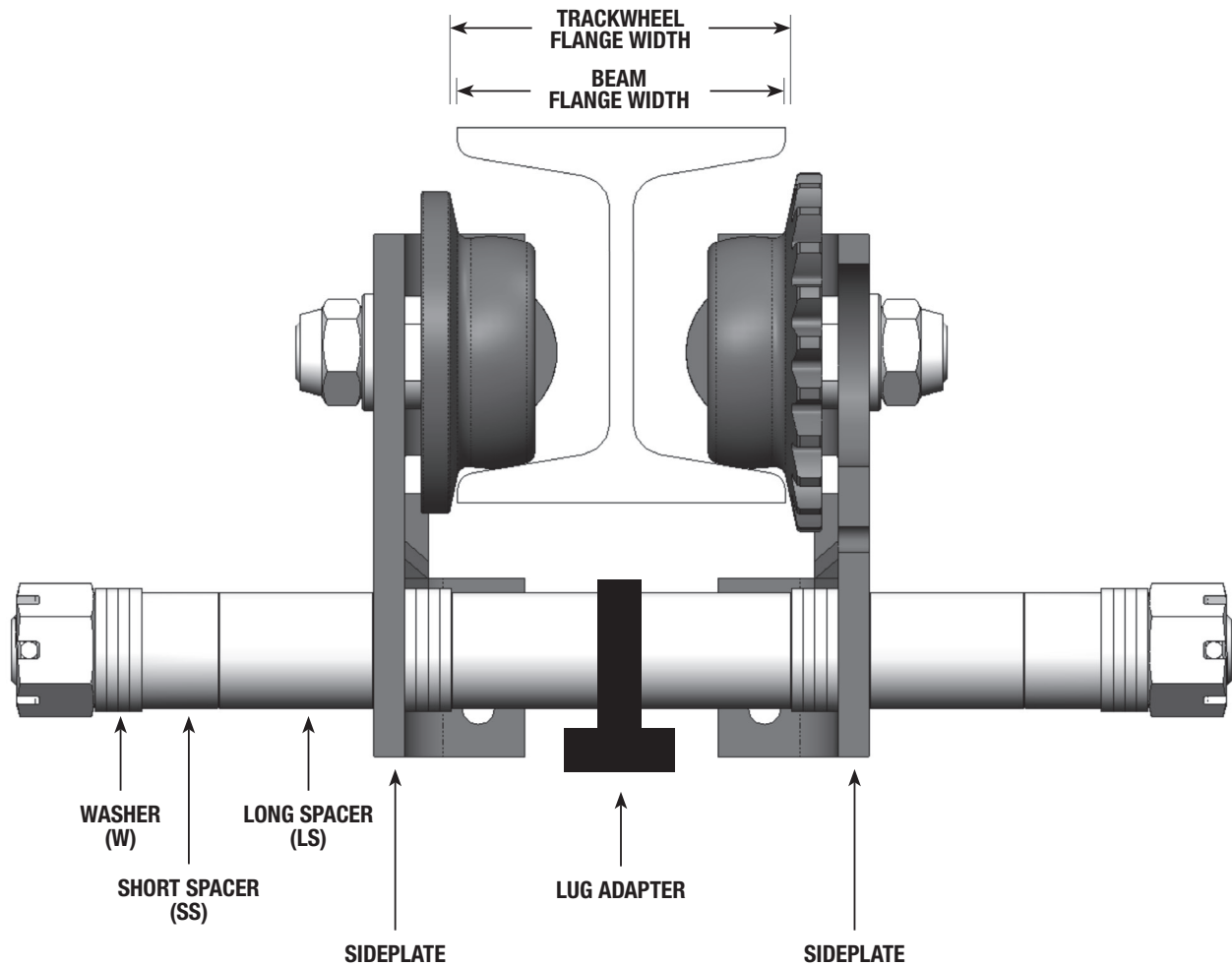


ELECTRIC/AIR HOIST SUSPENSION KITS

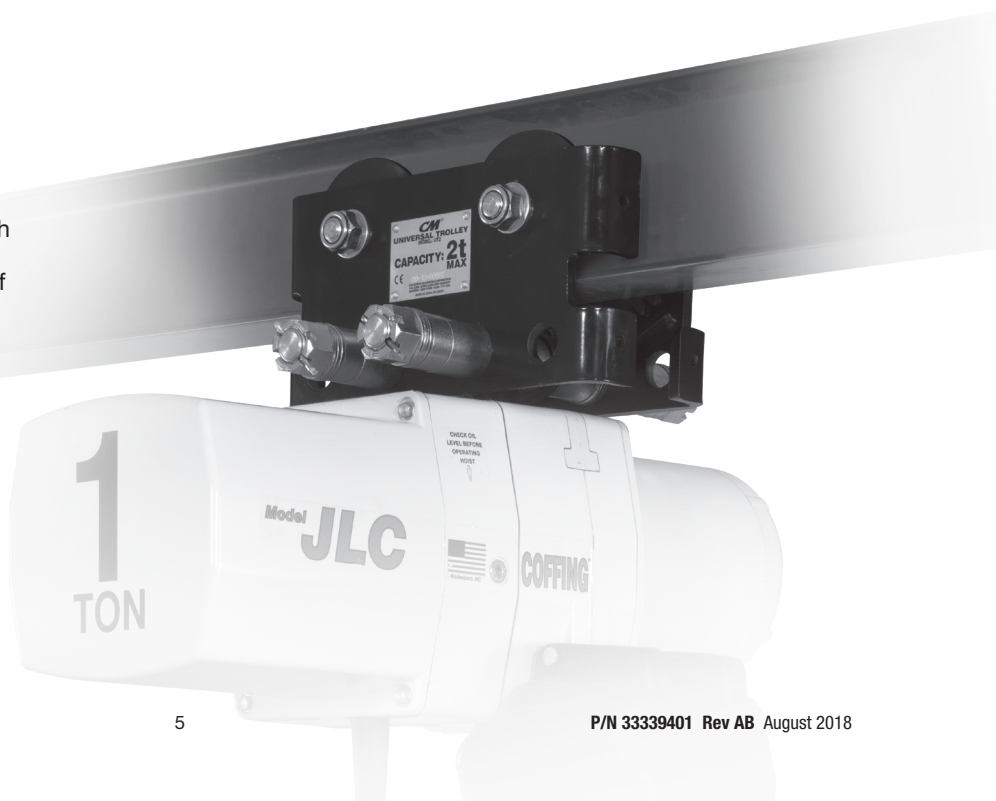
The CM Universal Trolley is designed to suspend several electric and air chain hoist models that are part of the CMCO family of brands. Select the appropriate Suspension Kit for your specific hoist listed below.

HOIST	REEVING	MOUNTING POSITION	TROLLEY	SUSPENSION KIT
CM SHOPSTAR / CM SHOPAIR / COFFING SLC / COFFING SLA / LITTLE MULE SLM / BUDGIT SHOPHOIST / BUDGIT SERIES 600	1 & 2	CROSS	UT1	20655K
CM LODESTAR (CLASSIC) (V1) (Small Frame)	1	PARALLEL	UT1	2992UT
CM LODESTAR (CLASSIC) (V1) (Small Frame)	1	CROSS	UT1	2992UTC
CM LODESTAR (CLASSIC) (V1) (Small Frame)	2	CROSS OR PARALLEL	UT1	2993UT
CM LODESTAR (CLASSIC) (V2) (Large Frame)	1	CROSS OR PARALLEL	UT2	3677UT
CM LODESTAR (CLASSIC) (V2) (Large Frame)	2	CROSS OR PARALLEL	UT2	3668UT
CM LODESTAR (CLASSIC) (V2) (Large Frame)	3	CROSS OR PARALLEL	UT3	9561UT
CM LODESTAR (NH) (V1) (Small Frame)	1	PARALLEL	UT1	2992NHUT
CM LODESTAR (NH) (V1) (Small Frame)	1	CROSS	UT1	2992NHUTC
CM LODESTAR (NH) (V1) (Small Frame)	2	CROSS OR PARALLEL	UT1	2993NHUT
CM LODESTAR (NH) (V2) (Large Frame)	1	CROSS OR PARALLEL	UT2	3677NHUT
CM LODESTAR (NH) (V2) (Large Frame)	2	CROSS OR PARALLEL	UT2	3668NHUT
CM LODESTAR (NH) (V2) (Large Frame)	3	CROSS OR PARALLEL	UT3	9561NHUT
CM LODESTAR (RRS)	1	PARALLEL	UT2	33337951
CM LODESTAR (RRS)	1	CROSS	UT2	33337951
CM MAN GUARD / BUDGIT BEHC / YALE KELC	1	CROSS OR PARALLEL	UT2	23456925
CM MAN GUARD / BUDGIT BEHC / YALE KELC	2	CROSS	UT2	32560625
CM MAN GUARD / BUDGIT BEHC / YALE KELC	2	PARALLEL	UT2	32560626
CM MAN GUARD / BUDGIT BEHC / YALE KELC	3	CROSS OR PARALLEL	UT3	50796125
CM AIRSTAR 6 / BUDGIT 6000 / YALE KALC / COFFING CAH (Large Frame)	1	CROSS OR PARALLEL	UT2	23456925
CM AIRSTAR 6 / BUDGIT 6000 / YALE KALC / COFFING CAH (Large Frame)	2	CROSS	UT2	32560625
CM AIRSTAR 6 / BUDGIT 6000 / YALE KALC / COFFING CAH (Large Frame)	2	PARALLEL	UT2	32560626
CM AIRSTAR 6 / BUDGIT 6000 / YALE KALC / COFFING CAH (Large Frame)	3	CROSS OR PARALLEL	UT3	50796125
BUDGIT 2200 / COFFING CAH (Small Frame) / CM AIRSTAR / YALE YAL	1	CROSS	UT1	23561201
BUDGIT 2200 / COFFING CAH (Small Frame) / CM AIRSTAR / YALE YAL	1	PARALLEL	UT1	23561202
BUDGIT 2200 / COFFING CAH (Small Frame) / CM AIRSTAR / YALE YAL	2	CROSS	UT1	23561203
BUDGIT 2200 / COFFING CAH (Small Frame) / CM AIRSTAR / YALE YAL	2	PARALLEL	UT1	23561204
COFFING JLC / LITTLE MULE FLC / YALE YJL	1 & 2	PARALLEL	UT2	33337901
COFFING JLC / LITTLE MULE FLC / YALE YJL	1 & 2	CROSS	UT2	33337901C
COFFING EC1	1 & 2	CROSS OR PARALLEL	UT2	33337902
COFFING EC1	3	CROSS OR PARALLEL	UT3	33337903
COFFING EC3 (3t Max.) (Plain Only)	1 & 2	CROSS OR PARALLEL	UT3	33337904

UT WASHER & SPACER PLACEMENT



Due to the variations in beam flange widths, it is suggested that the beam flange width be measured to determine the exact distribution of washers and spacers. The distance between trackwheel flanges should be 1/8 to 3/16 inch greater than the beam flange width for straight runway beams and 3/16 to 1/4 inch greater than the beam flange width if runway system includes sharp curves. Also, the use of other than CM supplied washers and spacers may result in trackwheel to beam flange variations and thus the recommendations in the following tables will not apply.



UT WASHER & SPACER PLACEMENT (CONTINUED)

Each washer/spacer chart shows the available trackwheel flange width setting from minimum to maximum. To center the hoist under the beam, use the same amount of washers and spacers between the lug adapter and sideplates. The amount of washers and spacers on the outside of the sideplates does not have to be the same.

Note: For triple-line Man Guard, omit one long spacer per side of the lug adapter.

UT1 MODEL

TRACKWHEEL FLANGE WIDTH (in.)	NUMBER OF WASHERS & SPACERS											
	W	SS	LS		W	SS	LS		LS	SS	W	
2.45	7	1	1		0	0	1		1	0	0	
2.68	6	1	1	SIDEPLATE	1	0	1	LUG ADAPTER	1	0	1	SIDEPLATE
2.92	5	1	1		2	0	1		1	0	2	
3.16	4	1	1		3	0	1		1	0	3	
3.39	3	1	1		4	0	1		1	0	4	
3.63	2	1	1		5	0	1		1	0	5	
3.86	1	1	1		6	0	1		1	0	6	
4.18	7	0	1		0	1	1		1	1	0	
4.42	6	0	1		1	1	1		1	1	1	
4.65	5	0	1		2	1	1		1	1	2	
4.89	4	0	1		3	1	1		1	1	3	
5.12	3	0	1		4	1	1		1	1	4	
5.36	2	0	1		5	1	1		1	1	5	
5.60	7	1	0		0	0	2		2	0	0	
5.83	6	1	0		1	0	2		2	0	1	
6.07	5	1	0		2	0	2		2	0	2	
6.31	4	1	0		3	0	2		2	0	3	
6.54	3	1	0		4	0	2		2	0	4	
6.78	2	1	0		5	0	2		2	0	5	
7.01	1	1	0		6	0	2		2	0	6	
7.33	7	0	0		0	1	2		2	1	0	
7.57	6	0	0		1	1	2		2	1	1	
7.80	5	0	0		2	1	2		2	1	2	
8.04	4	0	0		3	1	2		2	1	3	
8.27	3	0	0		4	1	2		2	1	4	
8.51	2	0	0		5	1	2		2	1	5	
8.75	1	0	0		6	1	2		2	1	6	

Example using a UT1 model:

Measure your beam flange width - **4.94"**.

In the trackwheel flange width column, the measured beam size is between 4.89" and 5.12". Always use the larger setting - **5.12"**.

The 5.12" setting requires **1-LS** (long spacer), **1-SS** (short spacer) and **4-W** (washers) between the lug adapter and sideplates.

The total clearance distance will be $5.12" - 4.94" = 0.18"$. If the application requires more clearance, move to the next larger setting- 5.36".

CAUTION: The installer must confirm that the trolley will remain on straight sections of beam at increased clearance settings.

UT2 & UT3 MODELS

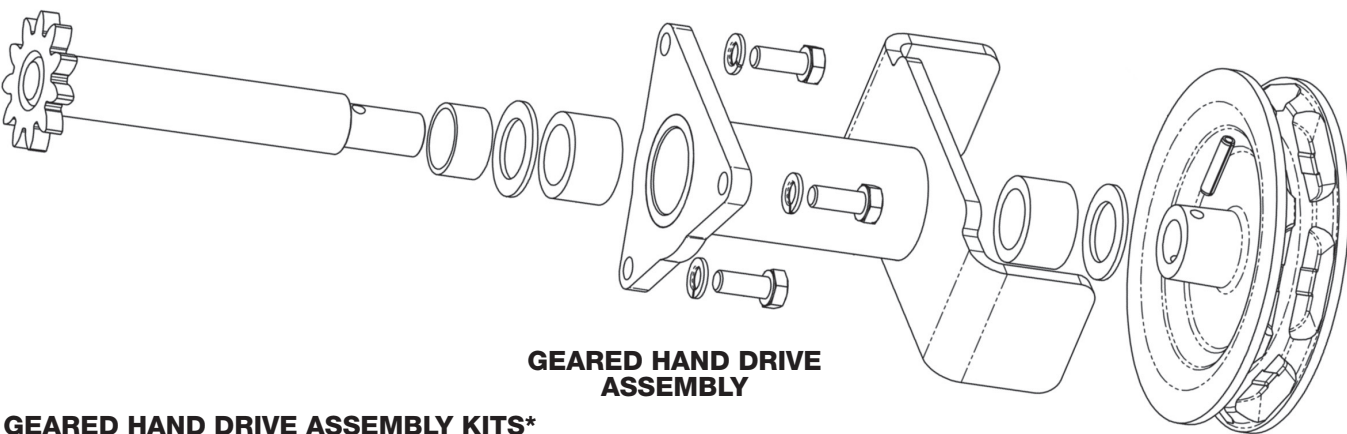
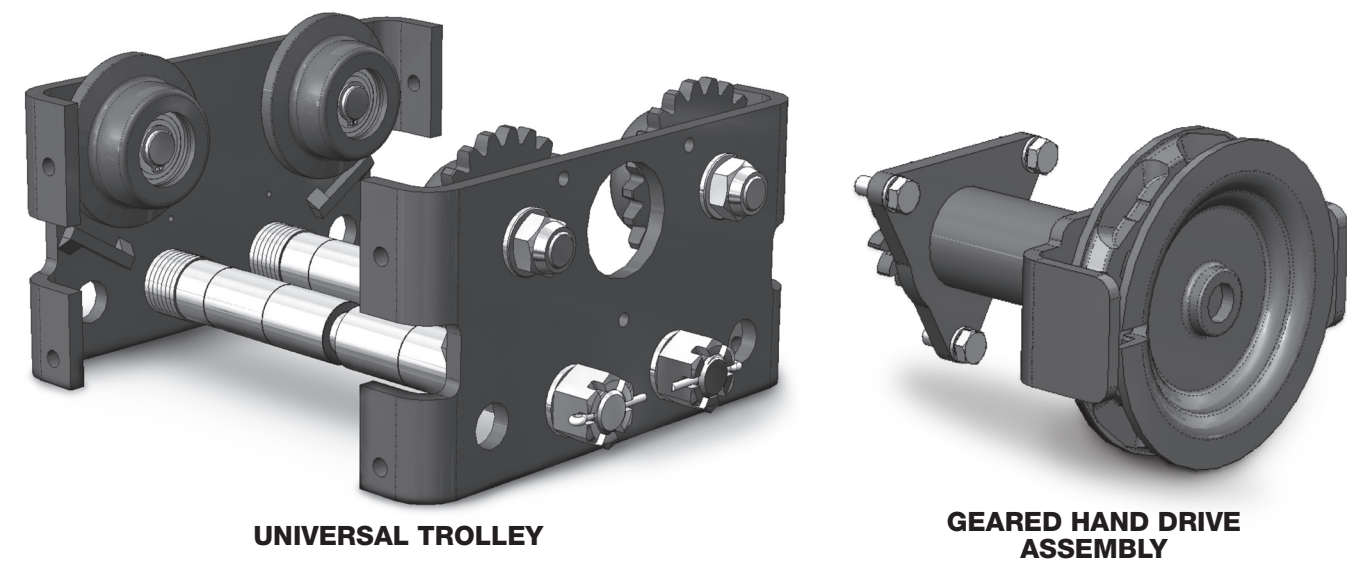
TRACKWHEEL FLANGE WIDTH (in.)		NUMBER OF WASHERS & SPACERS														
UT2	UT3	W	SS	LS	SIDEPLATE	W	SS	LS	LUG ADAPTER	LS	SS	W	SIDEPLATE	LS	SS	W
2.45	2.46	6	1	1		0	0	1		1	0	0		1	1	6
2.76	2.78	5	1	1		1	0	1		1	0	1		1	5	
3.08	3.09	4	1	1		2	0	1		1	0	2		1	4	
3.39	3.41	3	1	1		3	0	1		1	0	3		1	3	
3.71	3.72	2	1	1		4	0	1		1	0	4		1	2	
4.02	4.04	6	0	1		0	1	1		1	1	0		1	6	
4.34	4.35	5	0	1		1	1	1		1	1	1		1	5	
4.65	4.67	4	0	1		2	1	1		1	1	2		1	4	
4.97	4.98	3	0	1		3	1	1		1	1	3		1	3	
5.28	5.30	2	0	1		4	1	1		1	1	4		1	2	
5.60	5.61	6	1	0		0	0	2		2	0	0		0	6	
5.91	5.93	5	1	0		1	0	2		2	0	1		0	5	
6.23	6.24	4	1	0		2	0	2		2	0	2		0	4	
6.54	6.56	3	1	0		3	0	2		2	0	3		0	3	
6.86	6.87	2	1	0		4	0	2		2	0	4		0	2	
7.17	7.19	6	0	0		0	1	2		2	1	0		0	6	
7.49	7.50	5	0	0		1	1	2		2	1	1		0	5	
7.80	7.82	4	0	0		2	1	2		2	1	2		0	4	
8.12	8.13	3	0	0		3	1	2		2	1	3		0	3	
8.43	8.45	2	0	0	4	1	2	2	1	4	0	2				
8.75	8.76	1	0	0	5	1	2	2	1	5	0	1				



UTG GEARED HAND DRIVE INSTALLATION

The CM Universal Trolley is available in both plain and geared trolley models. The CM UT is designed to be easily converted from plain to geared in the field. Simply attach the appropriate geared hand drive assembly to the geared sideplate as shown.

Note: All hoists, except Shopstar / Shopair / SLC / SLA / SLM / Shophoist / Series 600, are to be parallel mounted when using geared hand drive assembly.



GEARED HAND DRIVE ASSEMBLY KITS*

KIT PART NUMBER			DESCRIPTION
UT1	UT2	UT3	
11843110	11843110	33336310	GEARED HAND DRIVE ASSEMBLY

* Hand chain and connector link are included with this kit (not shown).
 Hand chain part number: 04307654.
 Connecting link part number: 00404733.

INSTRUCTIONS:

- 1) Position hand drive assembly onto trolley as shown
- 2) Install (3) lock washers and (3) hex bolts
- 3) Tighten each hex bolt to 19-24 Nm [14-18 ft./lb.]

For UT1G & UT2G, use Geared Hand Drive Assembly 11843110
 For UT3G, use Geared Hand Drive Assembly 33336310
 For Motorized Universal Trolley, contact factory

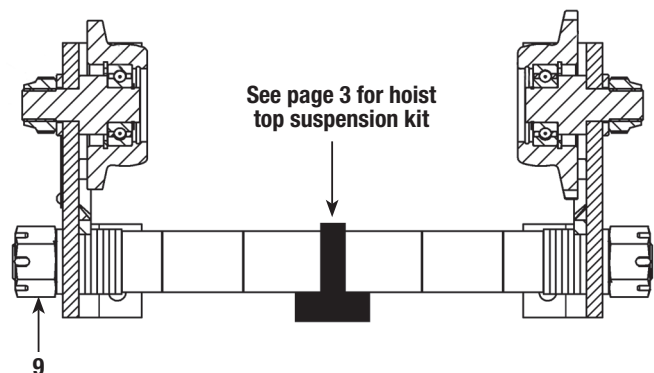
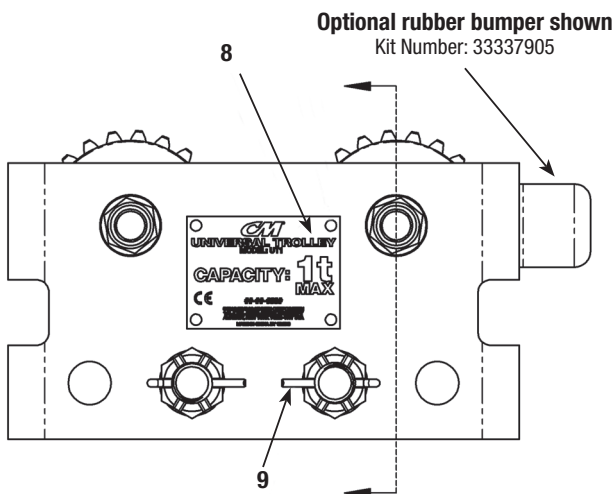
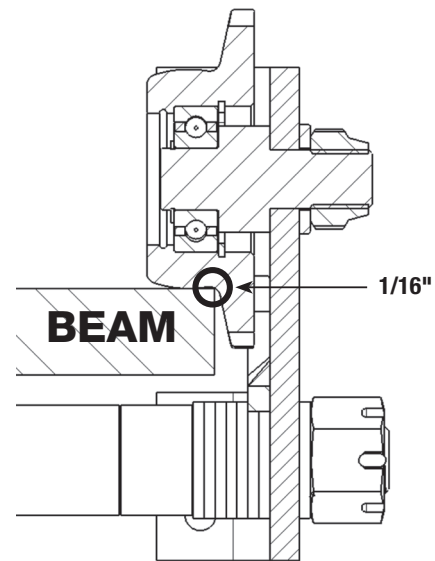
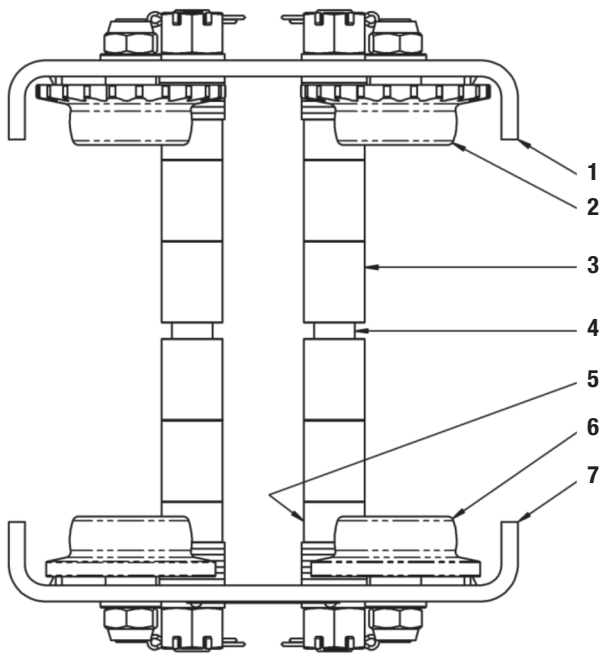
CHAIN EXTENSION KITS**

KIT PART NUMBER	DESCRIPTION
51703230	for 30 ft. lift hoist
51703240	for 40 ft. lift hoist
51703250	for 50 ft. lift hoist

** This kit extends the standard hand chain furnished with trolley, which is in proportion to a 20' lift hoist.

UT PARTS LIST

ITEM NUMBER	PART NUMBER			DESCRIPTION	KIT CONTENTS
	UT1	UT2	UT3		
1	11843108	23554608	33336308	SIDEPLATE KIT, GEARED	2 - geared wheels, 1 - geared sideplate, 2 (UT1 & UT2) or 4 (UT3) - bearings, 4 - retaining rings, 2 - axles, 2 - nuts and 2 - washers
2	0508211A	0508212A	0508213A	WHEEL ASSEMBLY, GEARED	1 - geared wheel, 2 - retaining rings, 1 (UT1 & UT2) or 2 (UT3) - bearings, 1 - axle, 1 - washer and 1 - nut
3	11842001	11842003	11842007	SPACER KIT, LONG	8 - long spacers
4	11843101	23554601	33336301	SUSPENSION PIN KIT	2 - suspension pins
5	11842002	11842004	11842008	SPACER KIT, SHORT	4 - short spacers
6	0508207A	0508208A	0508209A	WHEEL ASSEMBLY, PLAIN	1 - plain wheel, 2 - retaining rings, 1 (UT1 & UT2) or 2 (UT3) - bearings, 1 - axle, 1 - washer and 1 - nut
7	11843107	23554607	33336307	SIDEPLATE KIT, PLAIN	2 - plain wheels, 1 - plain sideplate, 2 (UT1 & UT2) or 4 (UT3) - bearings, 4 - retaining rings, 2 - axles, 2 - nuts and 2 - washers
8	11843102	23554602	33336302	NAMEPLATE KIT	1 - nameplate and 4 - drive screws
9	11843104	23554604	33336304	HARDWARE KIT	28 (UT1) or 24 (UT2 & UT3) - suspension pin washers, 4 - slotted nuts and 4 - cotter pins



[illegible]

[illegible]

WARRANTY

LIMITATION OF WARRANTIES, REMEDIES AND DAMAGES

INDEMNIFICATION AND SAFE OPERATION

Buyer shall comply with and require its employees to comply with directions set forth in instructions and manuals furnished by Seller and shall use and require its employees to follow such instructions and manuals and to use reasonable care in the use and maintenance of the goods and any replacement parts. Buyer shall not remove or permit anyone to remove any warning or instruction signs on the goods or replacement parts. In the event of personal injury or damage to property or business arising from the use of the goods or replacement parts, Buyer shall within 48 hours thereafter give Seller written notice of such injury or damage. Buyer shall cooperate with Seller in investigating any such injury or damage and in the defense of any claims arising therefrom.

If Buyer fails to comply with this section or if any injury or damage is caused, in whole or in part, by Buyer's failure to comply with applicable federal or state laws, rules or regulations safety requirements, Buyer shall indemnify and hold Seller harmless against any claims, loss or expense for injury or damage arising from the use of the goods and/or replacement parts.

CMCO Warranty (HOISTS)

A. Columbus McKinnon Corporation ("Seller") warrants to the original end user ("Buyer") that, for a period of one (1) year from the date of Seller's delivery of the goods (collectively, the "Goods") to the carrier, the Goods will be free from defects in workmanship and materials. (b) for a period of three (3) years from the date of Seller's delivery of the Goods to the carrier, the brake discs on the Goods will be free from defects in workmanship and materials; and (c) for the life of the Goods, the mechanical components including, without limitation, the sidewinder hoist lever, of the Goods (other than the brake discs on the Goods) will be free from defects in workmanship and materials. . In addition, Seller warrants to Buyer that, for a period of one (1) year from the date of their delivery by Seller to the carrier, any aftermarket or replacement parts, accessories or components purchased by Buyer with respect to any Goods (collectively, "Replacement Parts") will be free from defects in workmanship and materials.

B. IN THE EVENT OF ANY BREACH OF ANY SUCH WARRANTY, SELLER'S SOLE OBLIGATION SHALL BE EXCLUSIVELY LIMITED TO, AT THE OPTION OF SELLER, REPAIR OR REPLACEMENT, F.O.B. SELLER'S POINT OF SHIPMENT, OF ANY GOODS OR REPLACEMENT PARTS THAT SELLER DETERMINES TO HAVE BEEN DEFECTIVE OR, IF SELLER DETERMINES THAT SUCH REPAIR OR REPLACEMENT IS NOT FEASIBLE, TO A REFUND OF THE PURCHASE PRICE UPON RETURN OF THE GOODS OR REPLACEMENT PARTS TO SELLER. NO CLAIM AGAINST SELLER FOR ANY BREACH OF (i) SUCH WARRANTY WITH RESPECT TO THE ELECTRICAL COMPONENTS OF ANY GOOD OR REPLACEMENT PARTS SHALL BE VALID OR ENFORCEABLE UNLESS BUYER'S WRITTEN NOTICE THEREOF IS RECEIVED BY SELLER WITHIN ONE (1) YEAR FROM THE DATE OF SELLER'S DELIVERY TO THE CARRIER, (ii) SUCH WARRANTY WITH RESPECT TO THE BRAKE DISCS OF ANY GOOD SHALL BE VALID OR ENFORCEABLE UNLESS BUYER'S WRITTEN NOTICE THEREOF IS RECEIVED BY SELLER WITHIN THREE (3) YEARS FROM THE DATE OF SELLER'S DELIVERY TO THE CARRIER AND (iii) SUCH WARRANTY WITH RESPECT TO THE MECHANICAL COMPONENTS, INCLUDING, WITHOUT LIMITATION, THE SIDEWINDER HOIST LEVER, OF ANY GOOD (OTHER THAN THE BRAKE DISCS ON ANY GOOD) SHALL BE VALID OR ENFORCEABLE UNLESS BUYER'S WRITTEN NOTICE THEREOF IS RECEIVED BY SELLER WITHIN ONE (1) YEAR FROM THE DATE ANY ALLEGED CLAIM ACCRUES. EXCEPT FOR THE WARRANTIES SET FORTH ABOVE, SELLER MAKES NO OTHER WARRANTIES WITH RESPECT TO THE GOODS OR ANY REPLACEMENT PARTS, WHETHER EXPRESSED OR IMPLIED, INCLUDING ANY WARRANTIES OF MERCHANTABILITY, FITNESS FOR A PARTICULAR PURPOSE, QUALITY AND/OR THOSE ARISING BY STATUTE OR OTHERWISE BY LAW OR FROM ANY COURSE OF DEALING OR USE OF TRADE, ALL OF WHICH ARE HEREBY EXPRESSLY DISCLAIMED.

C. IN NO EVENT SHALL SELLER BE LIABLE TO BUYER OR ANY THIRD PARTY WITH RESPECT TO ANY GOOD OR REPLACEMENT PART, WHETHER IN CONTRACT, TORT OR OTHER THEORY OF LAW, FOR LOSS OF PROFITS OR LOSS OF USE, OR FOR ANY INCIDENTAL, CONSEQUENTIAL, SPECIAL, DIRECT OR INDIRECT DAMAGES, HOWSOEVER CAUSED. SELLER'S MAXIMUM LIABILITY TO BUYER WITH RESPECT TO THE GOODS OR ANY REPLACEMENT PART SHALL IN NO EVENT EXCEED THE PRICE PAID BY BUYER FOR THE GOODS OR REPLACEMENT PART THAT ARE THE SUBJECT OF THE APPLICABLE CLAIM.

D. Seller shall not be liable for any damage, injury or loss arising out of the use of the Goods or any Replacement Part if, prior to such damage, injury or loss, such Goods or Replacement Parts are: (1) damaged or misused following Seller's delivery to the carrier; (2) not maintained, inspected, or used in compliance with applicable law and Seller's written instructions and recommendations; or (3) installed, repaired, altered or modified (a) with any part or accessory other than those supplied by Seller or (b) without compliance with such laws, instructions or recommendations.

E. This warranty is limited and provided only to the original end user. **Each Good and Replacement Part must be registered within sixty (60) days of receipt of each product to establish eligibility.** Please register at www.cmworks.com/hoist-warranty-registration or submit registration card via US mail.

F. Any action against Seller for breach of warranty, negligence or otherwise in connection with the electrical components of any Good must be commenced by Buyer within one (1) year after: (a) the date any alleged claim accrues; or (b) the date of delivery of the Goods to Buyer, whichever is earlier. Any action against Seller for breach of warranty, negligence or otherwise in connection with the brake discs on any Good must be commenced by Buyer within three (3) years after: (y) the date any alleged claim accrues; or (z) the date of delivery of the Goods to Buyer, whichever is earlier. Any action against Seller for breach of warranty, negligence or otherwise in connection with the mechanical components of any Good (other than the brake discs on any Good) must be commenced by Buyer within one (1) year after the date any alleged claim accrues. Any action against Seller for breach of warranty, negligence or otherwise in connection with any Replacement Part must be commenced by Buyer within one (1) year after: (y) the date any alleged claim accrues; or (z) the date of delivery of the Replacement Part to Buyer, whichever is earlier.

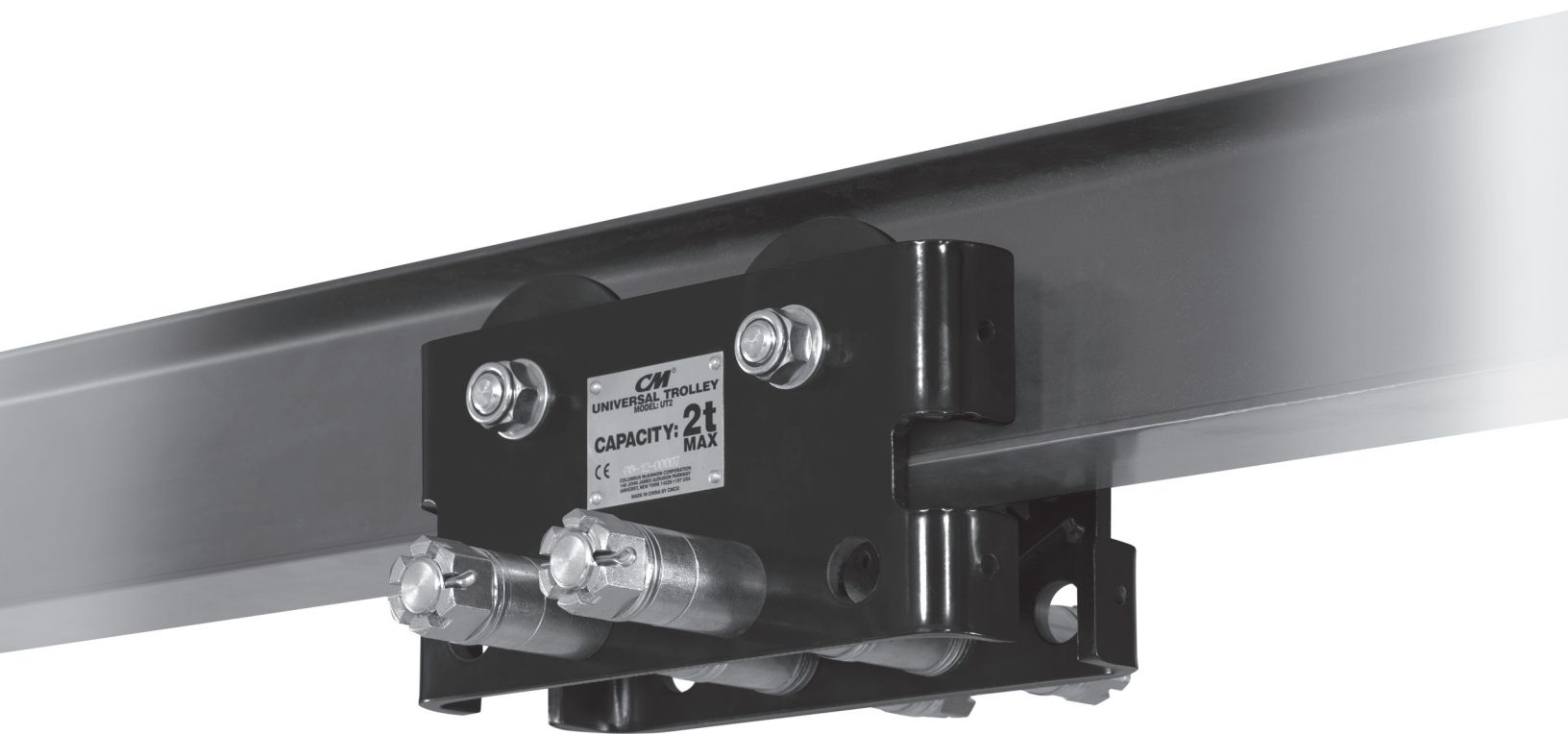
G. This warranty is contingent upon Buyer's proper maintenance and care of the Goods and/or Replacement Part, and does not extend to normal wear and tear. Seller reserves the right, at its option, to void this warranty in the event of Buyer's use with the Goods and/or Replacement Parts of parts or accessories other than those supplied by Seller.

WARNING

Alterations or modifications of equipment and use of non-Seller replacement parts can lead to dangerous operation and injury.

TO AVOID INJURY:

- Do not alter or modify equipment.
- Do use only replacement parts manufactured by seller.



DECLARATION OF CONFORMITY

In accordance with Machinery Directive 2006/42/EC (Appendix II A)

We hereby declare, that the design, construction and commercialized execution of the below mentioned machine complies with the essential health and safety requirements of the EC Machinery Directive. The validity of this declaration will cease in case of any modification or supplement not being agreed with us previously.

Furthermore, validity of this declaration will cease in case that the machine will not be operated correctly and in accordance with the operating instructions and/or not be inspected regularly.

Description:	Trolley UT
Capacity:	1000 - 3000 kg
Machine Type:	Hoisting equipment
Relevant EC Directives:	EC Machinery Directive 2006/42/EC
Transposed harmonised standards in particular:	ISO 12100-1:2003/A1:2009 ISO 12100-2:2003/A1:2009 EN 349:2008
Applied Standards:	ASME B30.11 (Monorail Systems and Underhung Cranes)
Quality Assurance :	ISO 9001
Date:	7.13.2012
Identification of the Signee:	

David K. Huber

David K. Huber
Director – Product Engineering Systems & Standards
Hoist and Rigging Americas
Columbus McKinnon Corporation



FAMILY OF BRANDS



USA: Ph: (800) 888.0985 • (716) 689.5400 • Fax: (716) 689.5644 • www.cmworks.com

CANADA: Ph: (877) 264.6478 • Fax: (877) 264.6477 • www.cmworks.com

UK: Ph: +44 1244 375375 • Fax: +44 1244 377403 • www.cmco.eu