

# TigerStop®

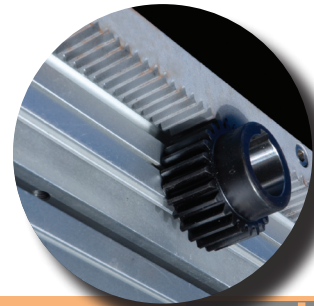
fast and accurate...every time

**Metal**  
October 2014 Mk1

## TigerRack™

Designed to easily automate your new and existing machinery, giving you repeatable accuracy in any pushing, pulling or positioning application.





Drive Type **Rack and Pinion**



## Accuracy and precision for heavier loads.

TigerRack™ offers precision, accuracy and speed for your industrial applications.

TigerRack™'s precision rack and pinion drive system will keep your production humming.

Designed for processing tube, bar stock and heavier materials.

Have a rough application? TigerRack™'s brake system helps guarantee that you don't end up miscutting parts.

Push it, Pull it, Position it.  
TigerRack™ gets the job done!

“All your quality control starts at the TigerStop”  
— Andy Schwall  
United Enertech

A smart addition to any model chop saw, up cut saw, band saw, radial arm saw, drilling, punching, mortising or boring machine.

**Accuracy** .008  
Inches

.20 mm

**Capacity** 720  
LBS

326 Kg

**Max Length** 108  
Feet

32.9 Meters

### TigerRack™ Specifications

Repeatable Accuracy  
.008 in (.20 mm)

Accuracy Validation  
NIST Certified

Power Requirement  
208 Vac @ 15 Amps  
50/60 Hz 1Ph Isolated Circuit

Drive Type  
Rack & Pinion

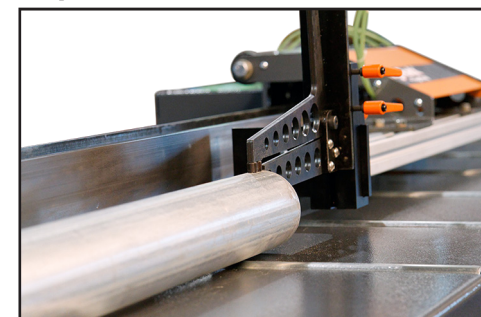
Working Lengths  
8 - 108 Feet (2.4 - 32.9 Meters)

Motor Type  
AC servo w/optical encoder

Pushing Capacity  
300 lbs (136 Kg) - w/o rollers  
720 lbs (326 Kg) w/ rollers

Warranty  
1 Year Bumper to Bumper

### Options



Pneumatic Tube Gripper



Pneumatic Flip Away



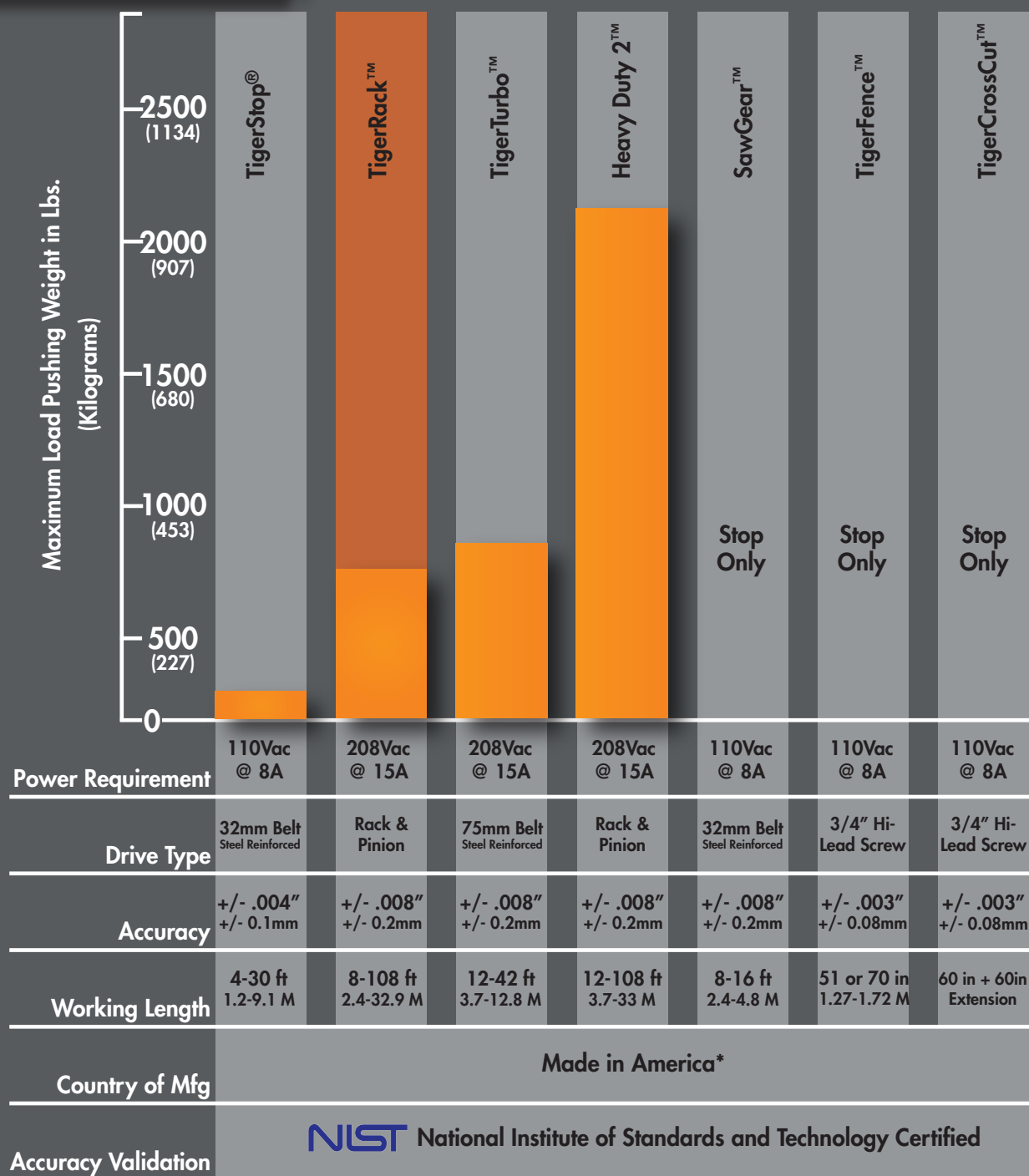
Brakes

# Comparison Chart

What TigerStop is right for you?

# TigerStop®

fast and accurate...every time



\* Made in USA from domestic and foreign components.

**TigerStop LLC**

12909 NE 95th Street

Vancouver, WA 98682

www.tigerstop.com • Phone (360) 254-0661 • Fax (360) 260-0755