

# Installation Guide

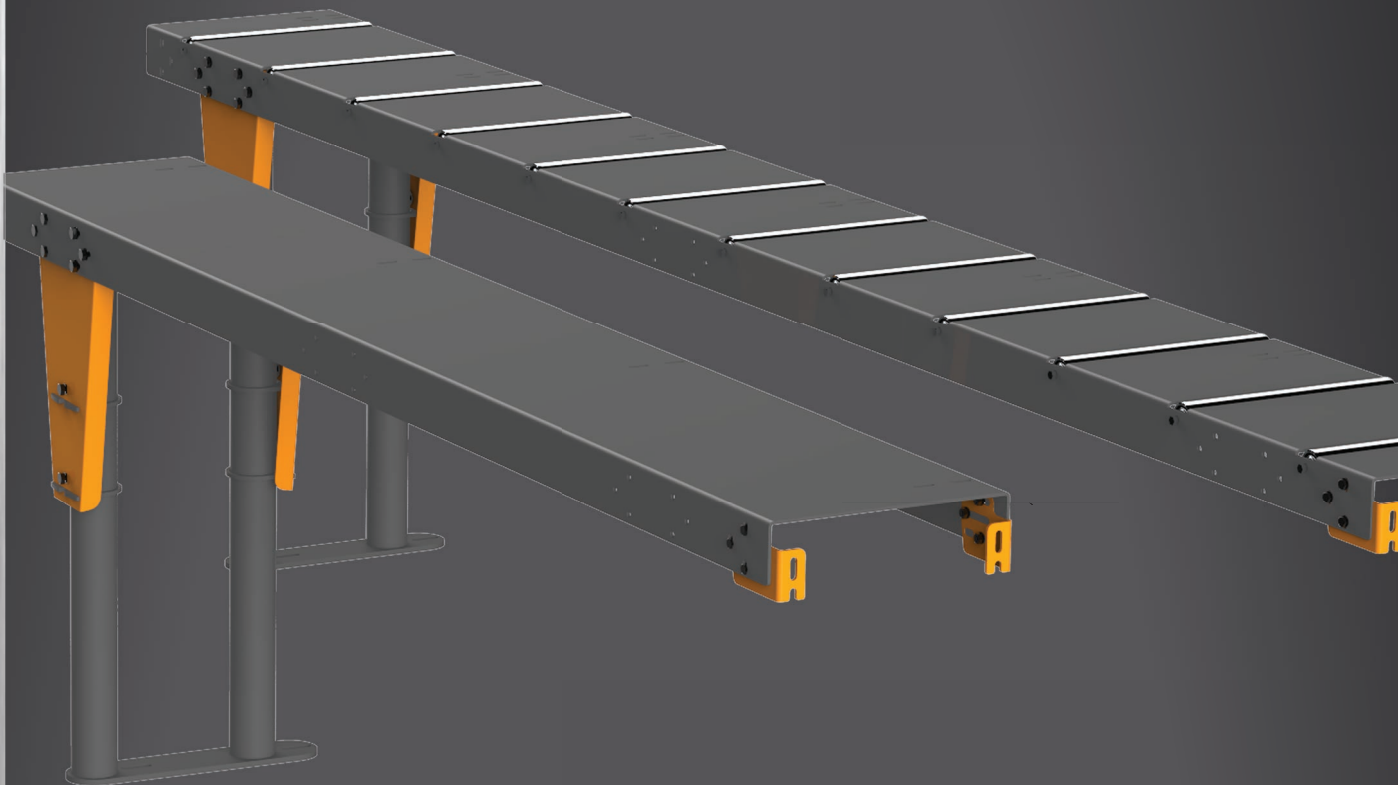
2017 TigerStop, LLC®



## TigerStop™

fast and accurate...every time

# TigerStop Feed Tables



February 2017 Mk1

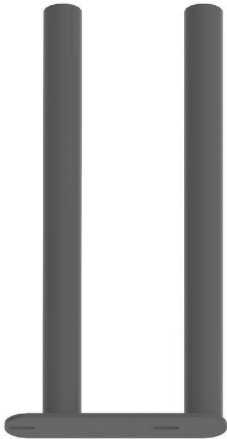
<b>Serial Number</b>	
----------------------	--

☐

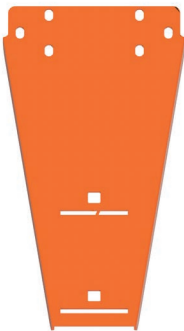
**Flat Top  
Sections**

☐

**Roller Top  
Sections**

☐

**No. of table legs**

☐

**No. of table leg  
brackets**

☐

**No. of roller  
spacers**

☐

**No. of binder  
rings**

☐

**No. of saw  
attachment plates**

☐

**No. of rollers**

☐

**No. of  
nutpacks**

# Safety First!

IMPORTANT SAFETY INFORMATION. READ ALL WARNINGS BEFORE OPERATING THIS PRODUCT.



## GENERAL WARNINGS

WARNING: Installation of your TigerStop Product must be done by a person trained in the safe design and installation of automation products, and in the safe operation of power equipment. Ensure that such installation meets all legally required safety requirements and guidelines, and that proper guarding and safety devices are provided on all sides of the equipment to preclude unintended access during operation. Consult with and follow the recommendations of a qualified safety engineer.

WARNING: TigerStop Products are components intended for use in conjunction with potentially dangerous machinery. The use of TigerStop Products does not make other machinery safe. TigerStop Products are not intended to substitute, in any manner, for safe operating practices in general, or for safety features present in other machines designed to make those machines as safe as possible. **TIGERSTOP PRODUCTS, IF USED OR INSTALLED IMPROPERLY, MAY CAUSE PERSONAL INJURY OR DEATH AND SHOULD ONLY BE OPERATED BY PERSONS TRAINED IN THEIR SAFE OPERATING PROCEDURES.** Illustrations of TigerStop Products in use do not show, and are not intended to show, all safety features and practices necessary for their safe operation.



## INSTALLATION WARNINGS

WARNING: TigerStop Products must be installed in accordance with all local, state, and federal regulations. Only personnel properly trained in the safe design and installation of automation machinery and related power equipment should install TigerStop Products onto other equipment, to ensure a safe and proper work station. TigerStop Products should not be operated without proper training, both in the operation of TigerStop Products, and in the operation of related equipment.

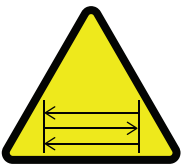
### IMPORTANT CAUTION:

The motor box (compartment) contains DC voltage with potentially FATAL amperage. NEVER attempt any unauthorized actions inside the motor box.



## INTERCONNECTS

WARNING: Using a TigerStop interconnect does not relieve you of the responsibility for making sure that your saw or other tool has all the necessary safety equipment in place. All installations must meet all legally required safety requirements and guidelines. Installation and training should be done following the recommendations of a qualified safety engineer.



## OPERATION

DANGER: This machine can start, move and stop automatically. Keep hands and loose clothing clear of moving parts while operating. Moving parts can crush and cut. When used with a saw or other cutting equipment, bodily injury and death may result if operated without safety guards on all machines. Do not operate with guards removed. Operators must wear adequate eye and ear protection.

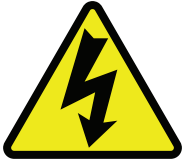


DANGER! Don't get pinched by the push feeder. Keep your hands away when in motion!

**IMPORTANT SAFETY INFORMATION. READ ALL WARNINGS BEFORE OPERATING THIS PRODUCT.**



Keep the work area clean and well lighted to avoid accidental injury.



Do not use TigerStop machines in a dangerous environment. Using power tools in damp or wet locations or in rain can cause shock or electrocution.



Do not operate near flammable liquids or in gaseous or explosive atmospheres!



Wear proper apparel, no loose clothes, long hair or jewelry which could get pulled into moving machinery or materials.  
Wear non slip footwear, safety glasses, ear protection and a dust mask.



Use only 3- wire extension cords that have 3-prong grounding type plugs and 3-pole receptacles that accept the tools plug for 120VAC. Use only 5-wire cords and plugs when using 3 phase.

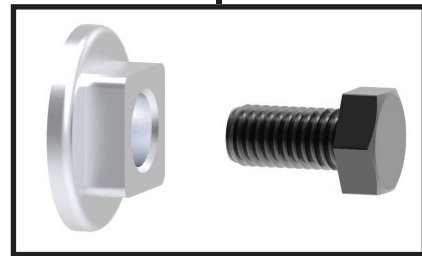
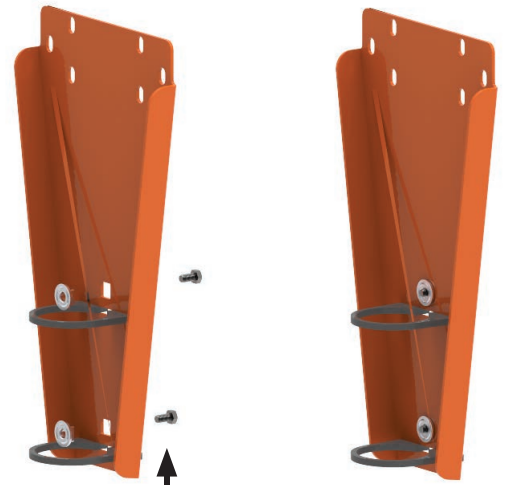
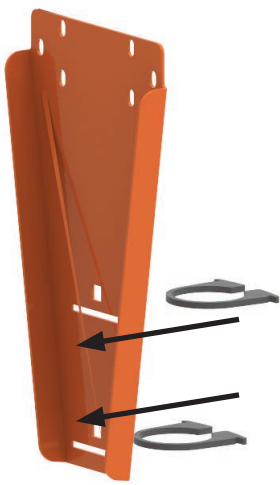


Do not open motor compartment or controller keypad. DC Voltage with potentially FATAL amperage!  
Disconnect power before servicing. No user-serviceable parts inside.

DO NOT operate this or any machine under the influence of drugs or alcohol!



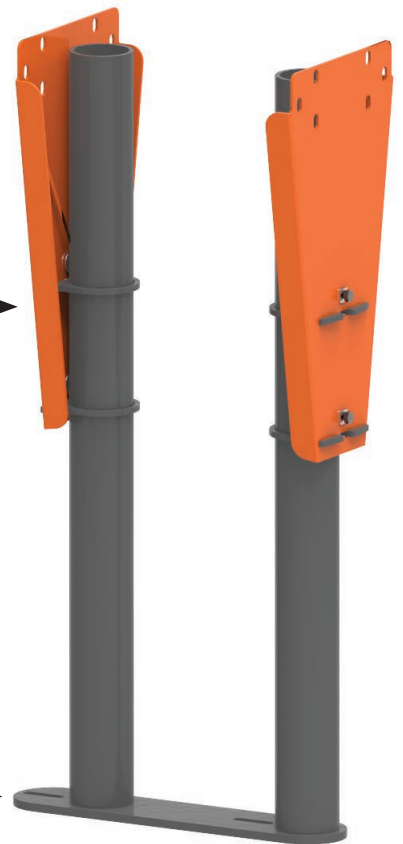
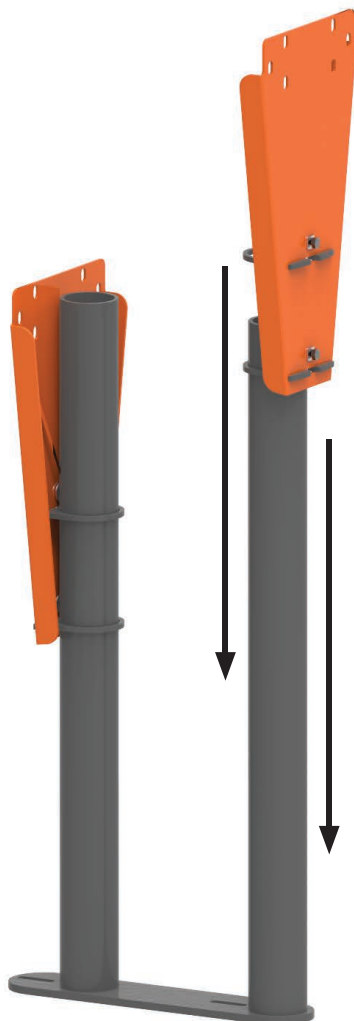
No one should operate this machine except for fully qualified personnel.  
Read the manual!



Insert legs through the binder rings on the leg brackets.

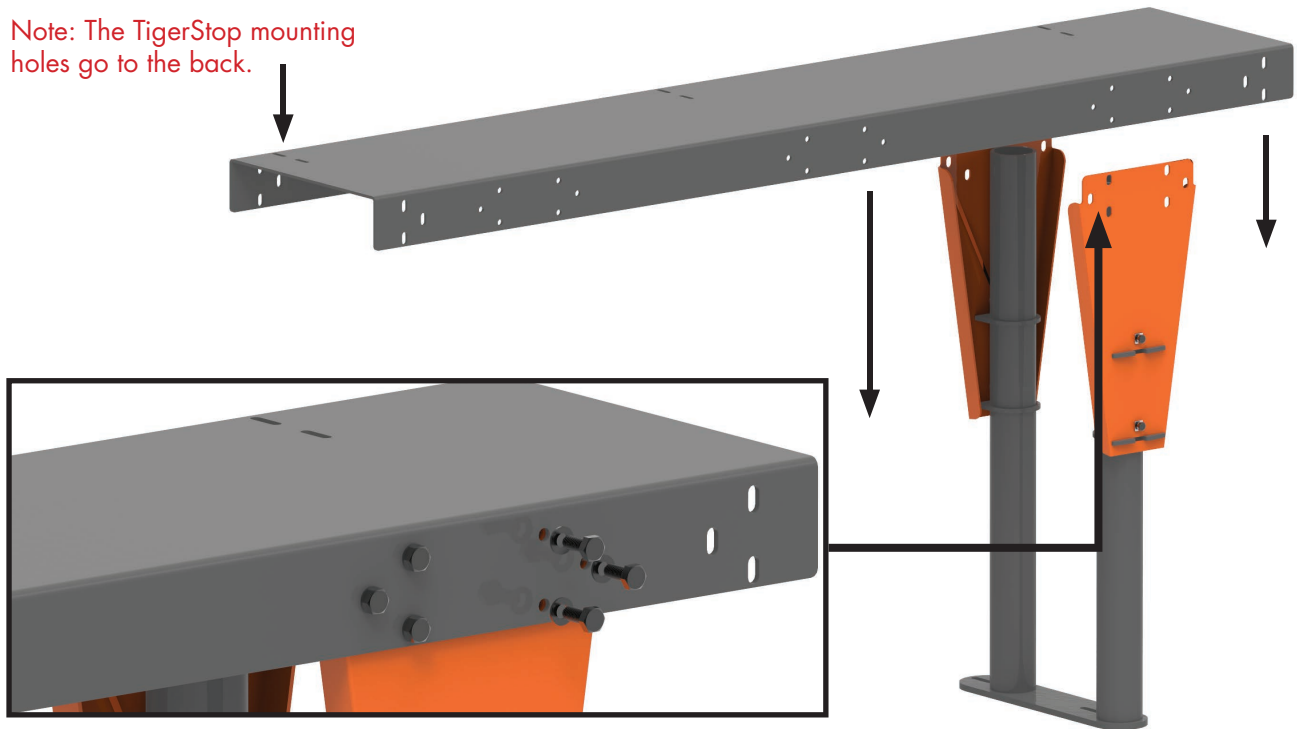
Snug down the leg bolts to hold the leg brackets in place.

Note: If you have tilted leg brackets, The back bracket will be turned 180 degrees. Both brackets should tilt in the same direction.



Note: The tab on the table leg foot goes to the back of the table.

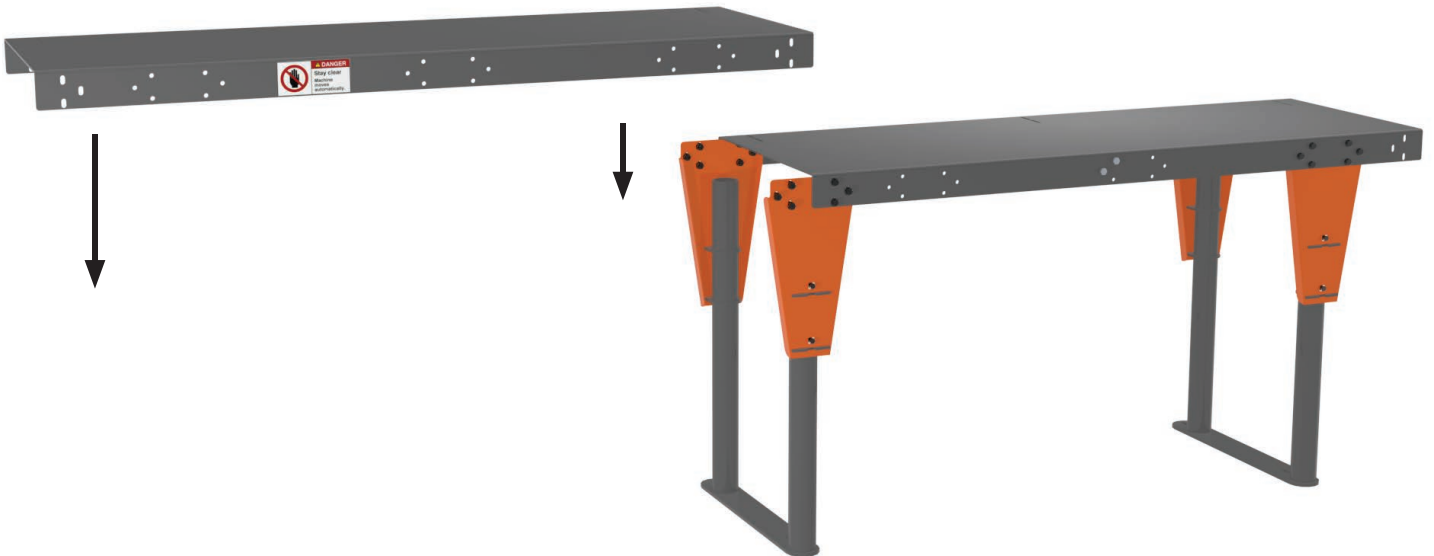
Note: The TigerStop mounting holes go to the back.



Lower the table top onto the assembled table leg. The other side of the table will be attached to your tool.

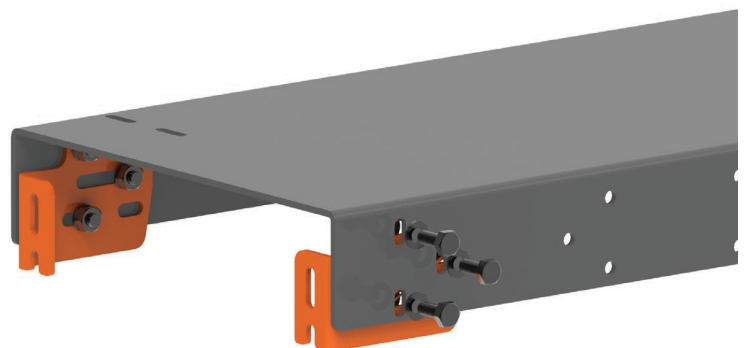
Note: An extra table leg can be purchased to make a free standing table.

If you have a longer table, you may need to use a table leg to join two table, as shown below.



Install the end brackets at the end of the table that will attach to your tool.

Note: There is a right and left bracket.



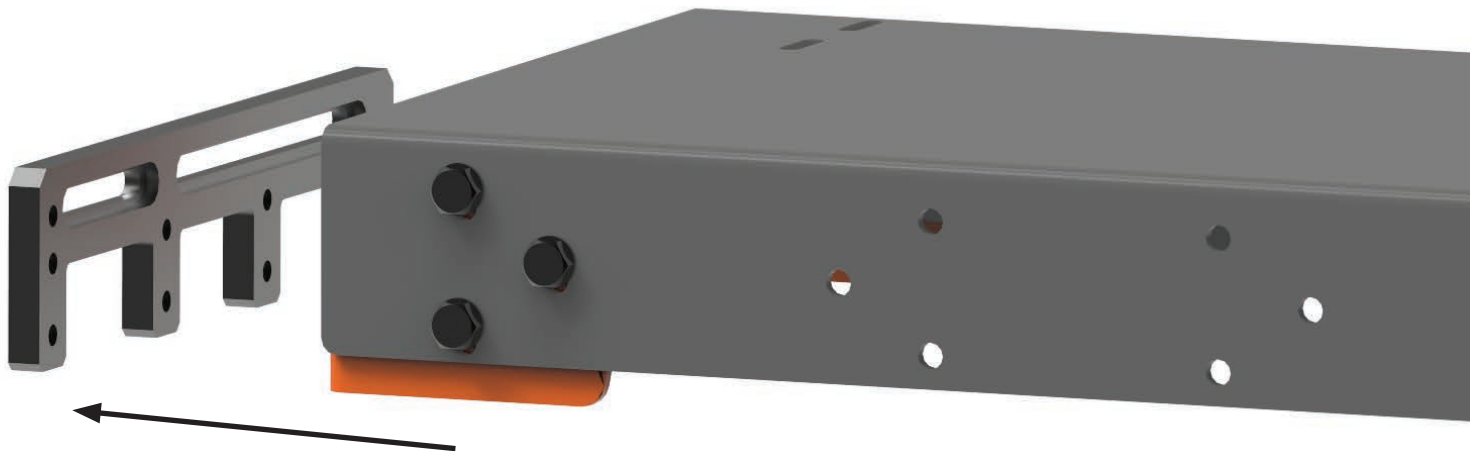
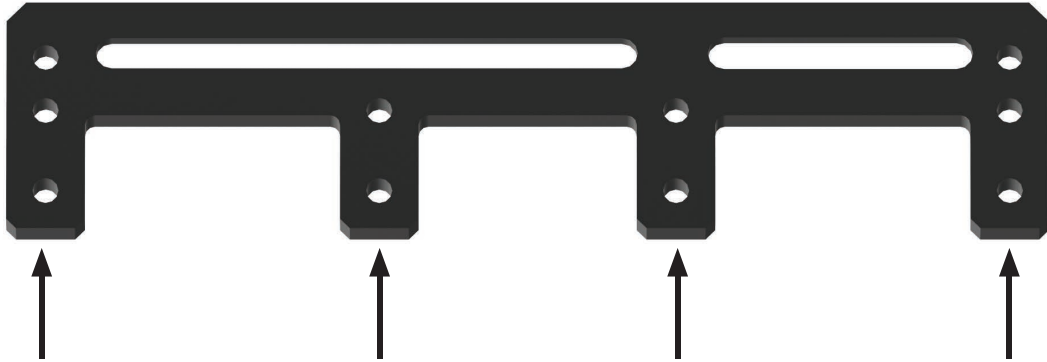
## Install Saw Attachment Plate

The Saw Attachment Plate is an optional accessory that mounts directly to the side of your tool. Once installed, the TigerStop table attaches to the bracket and the slotted holes on the attachment plate allow you to move the table horizontally.

1. Place the Saw Attachment Plate against your tool in the location you want to mount it.
2. Use a center punch and mark a bolt hole in each of the slotted holes.



3. Drill and tap each hole.
4. Place Saw Attachment Plate and loosely insert hardware.
5. The table end brackets will attach to two sets of tapped holes on the saw attachment plate using the remaining four bolts..





FIND US ONLINE AT  
**www.tigerstop.com**

**TigerStop®**  
fast and accurate...every time

12909 NE 95th Street  
Vancouver, WA 98682-2426  
1.360.254.0661  
sales@tigerstop.com

---

**TigerStop B.V. Holland**

31 546 575 171  
info@tigerstop.nl